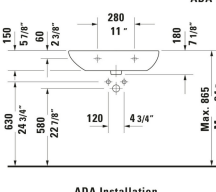
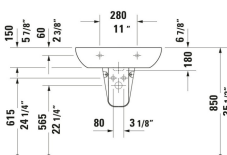
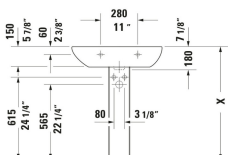
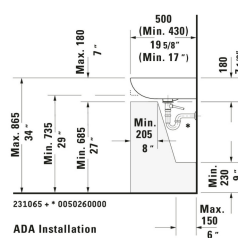
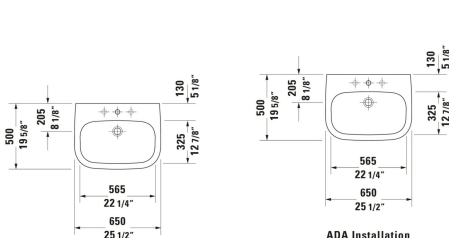


D-Code Wall Mounted Sink # 23106500002

| < 25 5/8 " > |



Wall Mounted Sink	Dimension	Weight	Order number
Semi-circular, Includes faucet deck: Yes, Overflow: Yes, Underside glazed, Back side glazed: No, 25 5/8 ", ADA: Yes, cUPC listed: Yes			
Colors			
00 White			
Variant			
● White High Gloss, Number of basins: 1 Middle, Number of faucet holes: 1 Middle		47.620 lb	23106500002
Spare parts			
Sink Drain Suitable for washbasin with overflow, Ø 2 1/2 "	Ø 2 1/2 "	0.772 lb	005052
Suitable products			
Sink Shroud Installation Type: Wall-mounted, 9 5/8 x 10 1/2 "	9 5/8 x 10 1/2 "		085718
Pedestal Installation Type: Floorstanding, 6 3/4 x 7 1/2 "	6 3/4 x 7 1/2 "		086327

All drawings contain the necessary measurements which are subject to standard tolerances. They are stated in inch & mm and are non-binding. Exact measurements, in particular for customized installation scenarios, can only be taken from the finished ceramic piece.