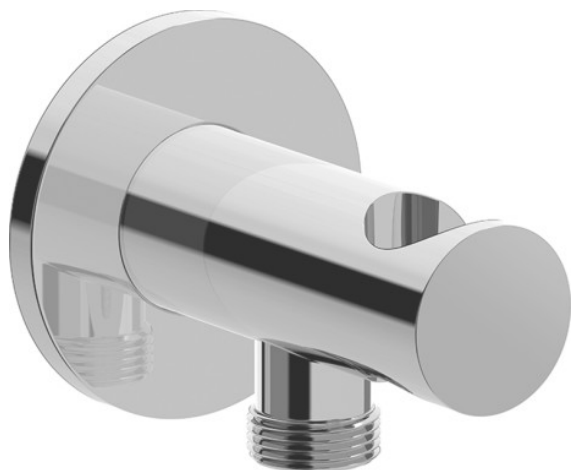


## Faucet Accessories wall outlet # UV0630007



wall outlet	Dimension	Weight	Order number
round escutcheon, with hand shower holder , non-return valve in the hose connection, fixed holding position			
<b>Colors</b>			
<b>Variant</b>			
<b>Suitable accessories</b>			
Single lever bath mixer for concealed installation connection type: basic set for concealed installation, diverter bath spout / hand shower, round escutcheon Ø 170 mm, flow rate 22,5 l/min (3 bar), ceramic cartridge, includes: visible parts with functional unit, recommended operating pressure 3 - 5 bar, with diverter valve and security combination			C15210018
Single lever bath mixer for concealed installation connection type: basic set for concealed installation, diverter bath spout / hand shower, round escutcheon Ø 170 mm, flow rate 22,5 l/min (3 bar), ceramic cartridge, includes: visible parts with functional unit, recommended operating pressure 3 - 5 bar, with diverter valve			C15210012
Thermostatic bath mixer for concealed installation connection type: basic set for concealed installation, thermostatic cartridge, safety lock at 38°C, round escutcheon Ø 170 mm, diverter bath spout / hand shower, includes: visible parts with functional unit, recommended operating pressure 3 - 5 bar, with shut-off and diverter valve and security combination			C15200018
Thermostatic bath mixer for concealed installation connection type: basic set for concealed installation, thermostatic cartridge, safety lock at 38°C, round escutcheon Ø 170 mm, flow rate 20,6 l/min (3 bar), diverter bath spout / hand shower, includes: visible parts with functional unit, recommended operating pressure 3 - 5 bar, with shut-off and diverter valve			C15200014

## Faucet Accessories wall outlet # UV0630007

Single lever bath mixer for concealed installation connection type: basic set for concealed installation, ceramic cartridge, round escutcheon Ø 170 mm, diverter bath spout / hand shower, 2 outlets, includes: visible parts with functional unit, surface chrome, recommended operating pressure 3 - 5 bar	B25210018
Single lever bath mixer for concealed installation connection type: basic set for concealed installation, ceramic cartridge, round escutcheon Ø 170 mm, diverter bath spout / hand shower, 2 outlets, includes: visible parts with functional unit, surface chrome, recommended operating pressure 3 - 5 bar	B25210012
Single lever bath mixer for concealed installation connection type: basic set for concealed installation, ceramic cartridge, diverter bath spout / hand shower, round escutcheon Ø 170 mm, 2 outlets, includes: visible parts with functional unit, surface chrome, recommended operating pressure 3 - 5 bar	B15210018
Single lever bath mixer for concealed installation connection type: basic set for concealed installation, ceramic cartridge, diverter bath spout / hand shower, round escutcheon Ø 170 mm, 2 outlets, includes: visible parts with functional unit, surface chrome, recommended operating pressure 3 - 5 bar	B15210012

All drawings contain the necessary measurements which are subject to standard tolerances. They are stated in mm and are non-binding. Exact measurements, in particular for customised installation scenarios, can only be taken from the finished piece.

